

§ 17.96 Critical habitat—plants.

* * * * *

(a) *Flowering plants.*

* * * * *

Family Brassicaceae: *Leavenworthia texana*
(Texas golden gladeceess)

(1) Critical habitat units are depicted for San Augustine and Sabine Counties, Texas, on the maps below.

(2) Within these areas, the primary constituent elements of the physical or biological features essential to the conservation of *Leavenworthia texana* consist of the three primary constituent elements identified for the species:

(i) Exposed outcrops of the Weches Formation within Weches prairies. Within the outcrop sites, there must be bare, exposed bedrock on top-level surfaces or rocky ledges with small depressions where rainwater or seepage can collect. The openings should support Weches Glade native herbaceous plant communities.

(ii) Thin layers of rocky, alkaline soils, underlain by glauconite clay (greenstone, ironstone, bluestone), that are found only on the Weches Formation. Appropriate soils are in the series classifications Nacogdoches clay loam, Trawick gravelly clay loam, or Bub clay loam, ranging in slope from 1–15 percent.

(iii) The outcrop ledges should occur within the glade such that Texas golden gladeceess plants remain unshaded for a significant portion of the day, and trees should be far enough away from the outcrop(s) that leaves do not accumulate within the gladeceess habitat. The habitat should be relatively clear of nonnative and native invasive plants, especially woody species, or with only a minimal level of invasion.

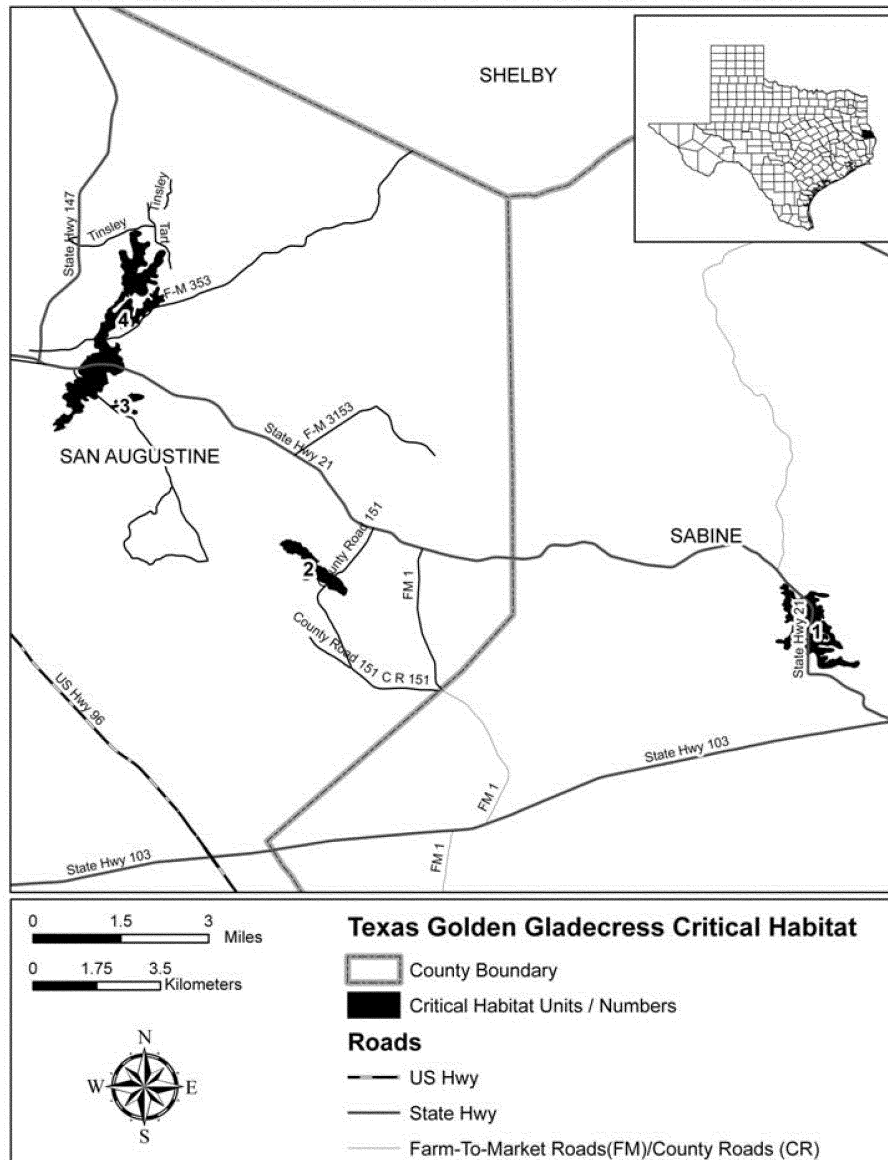
(3) Critical habitat does not include man-made structures (such as buildings, bridges,

aqueducts, runways, well pads, metering stations, roads and the filled areas immediately adjacent to pavement, and other paved areas) and the land on which they are located existing within the legal boundaries on October 11, 2013.

(4) *Critical habitat map units.* Soil Survey Geographic Dataset (SSURGO) was used as a base map layer. The SSURGO is an updated digital version of the Natural Resources Conservation Service county soil surveys. The SSURGO uses recent digital orthophotos and fieldwork to update the original printed surveys. Data layers defining map units were created using the Texas golden gladeceess' restriction to the Weches Formation and its tight association with the three soil map units: Nacogdoches clay loam 1–5 percent slope, Trawick gravelly clay loam 5–15 percent slope, or Bub clay loam 2–5 percent slope. In San Augustine and Sabine Counties, these soil types are restricted to the Weches Formation. Locations of all known gladeceess populations, as well as potential glade sites, were overlaid on the three aforementioned soil mapping units from the San Augustine and Sabine County's soils survey. Potential glade sites were identified using soil map units and a time series of aerial photographs that depicted changes in land cover. The maps in this entry, as modified by any accompanying regulatory text, establish the boundaries of the critical habitat designation. The coordinates or plot points or both on which each map is based are available to the public at the Service's internet site, at http://www.fws.gov/southwest/es/ElectronicLibrary/ElectronicLibrary_Main.cfm, at <http://www.regulations.gov> at Docket No. FWS-R2-ES-2013-0027, and at the field office responsible for this designation. You may obtain field office location information by contacting one of the Service regional offices, the addresses of which are listed at 50 CFR 2.2.

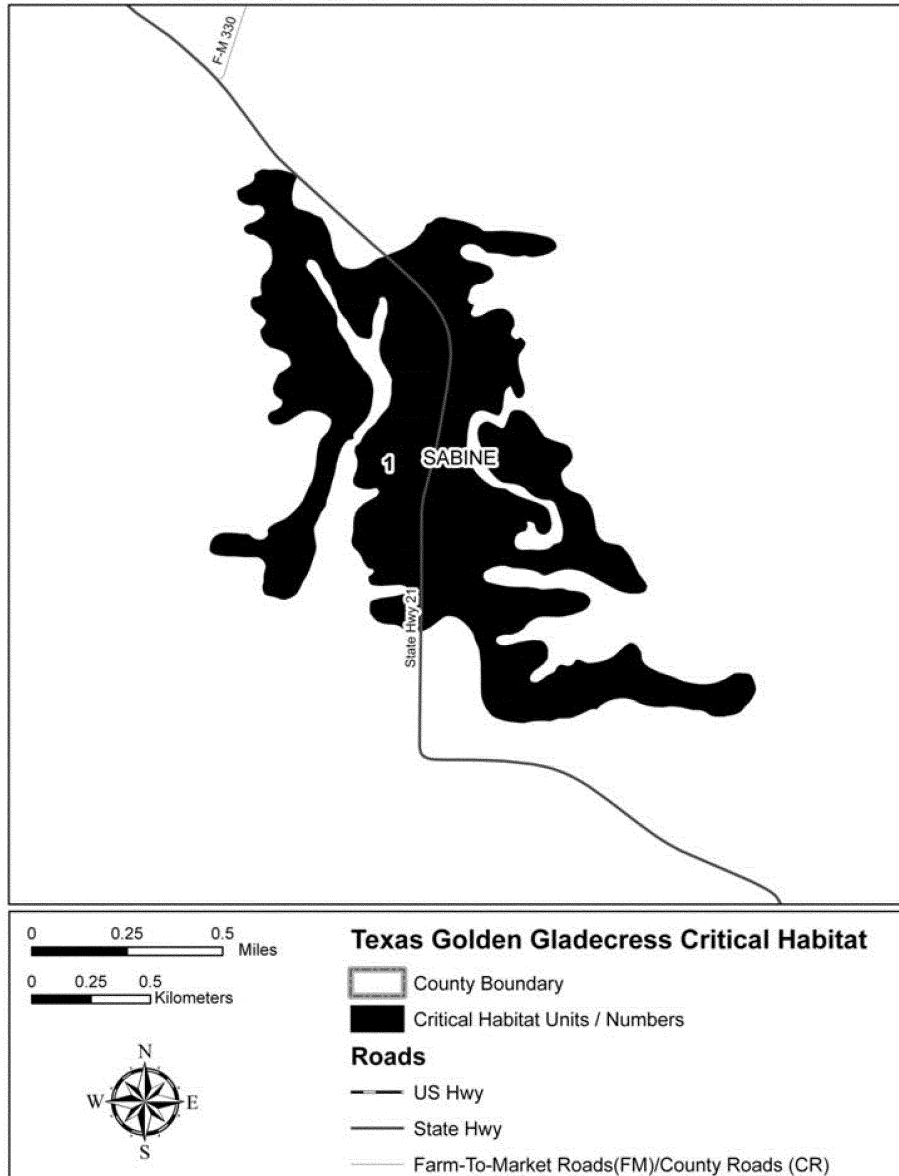
(5) Index map follows:

Index Map
Critical Habitat for *Leavenworthia texana* (Texas golden gladeceess)



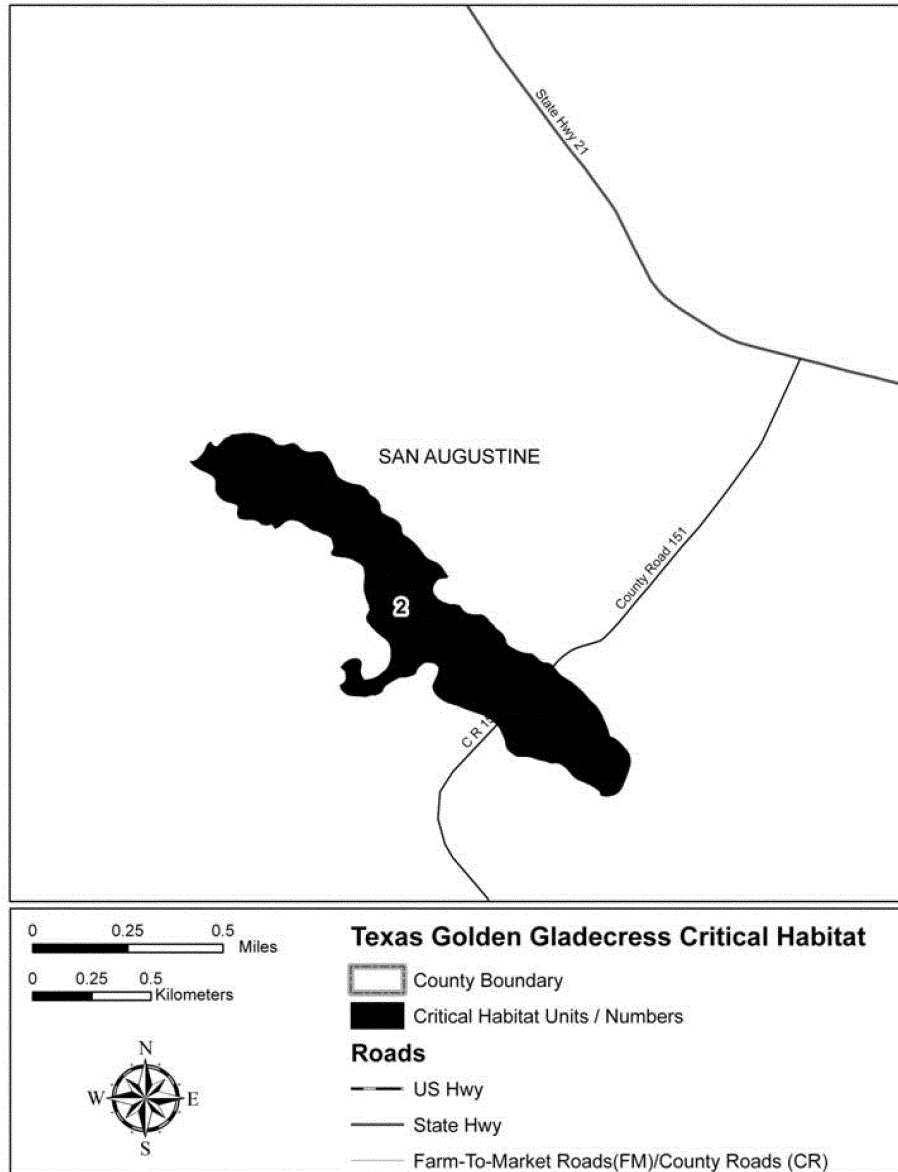
(6) Unit 1: Geneva Unit, Sabine County, Texas. Map of Unit 1 follows:

Unit 1
Critical Habitat for *Leavenworthia texana* (Texas golden gladeceess)



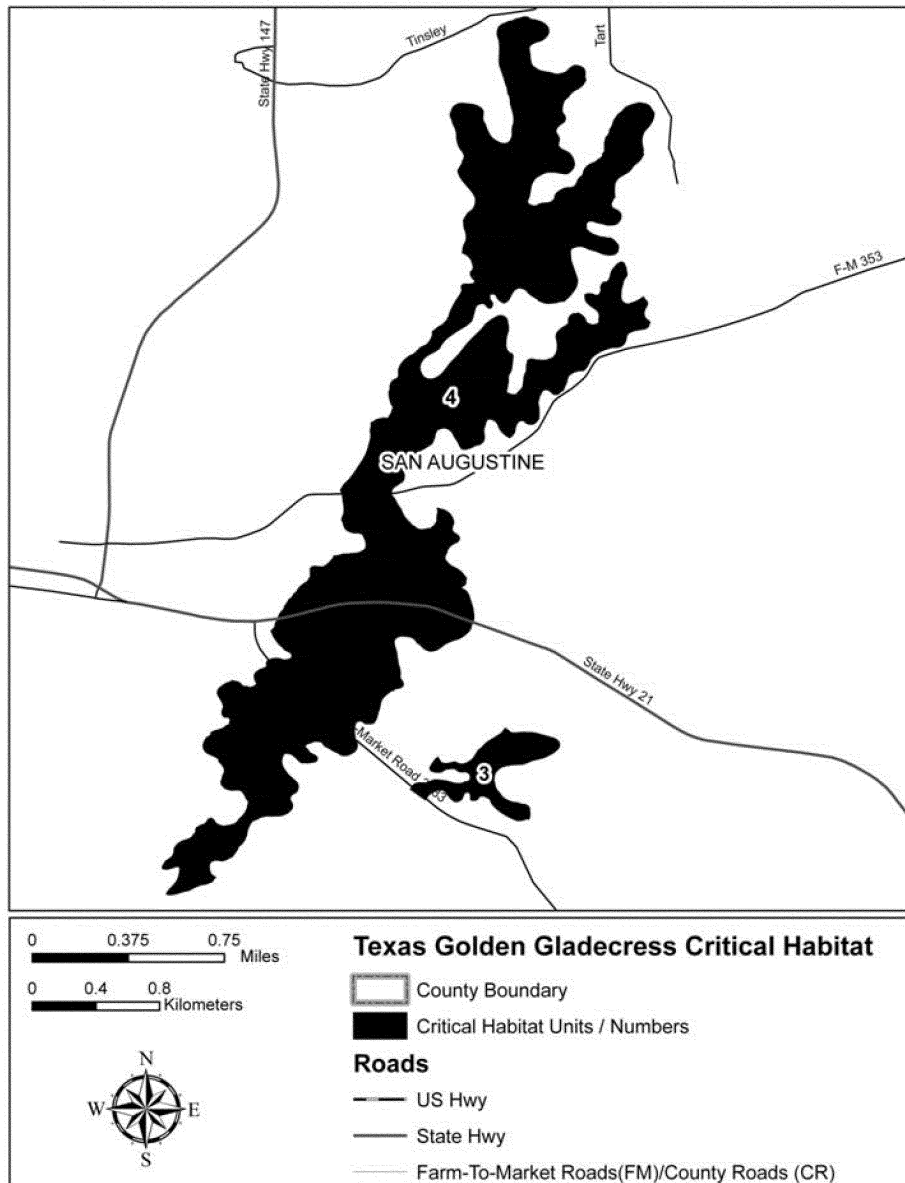
(7) Unit 2: Chapel Hill, San Augustine County. Map of Unit 2 follows:

Unit 2
Critical Habitat for *Leavenworthia texana* (Texas golden gladeceess)



(8) Unit 3: Southeast Caney Creek Glades,
San Augustine County, Texas. Map of Units
3 and 4 follows:

Units 3 & 4
Critical Habitat for *Leavenworthia texana* (Texas golden gladeceess)



§ 17.96(a), Nt.

(9) Unit 4: Northwest Caney Creek Glades, San Augustine County, Texas. Map of Unit 4 is depicted in paragraph (8) of this entry.

* * * * *

Family Malvaceae: *Hibiscus dasycalyx* (Neches River rose-mallow)

(1) Critical habitat units are depicted for Cherokee, Harrison, Houston, Nacogdoches, and Trinity Counties, Texas, on the maps below.

(2) Within these areas, the primary constituent element of the physical or biological features essential to the conservation of *Hibiscus dasycalyx* is intermittent or perennial wetlands within the Neches, Sabine, and Angelina River floodplains or Mud and Tantanogogue Creek basins that contain:

(i) Hydric alluvial soils and the potential for flowing water when found in depressional sloughs, oxbows, terraces, side channels, or sand bars; and

(ii) Native woody or associated herbaceous vegetation, largely with an open canopy providing partial to full sun exposure with few to no nonnative species.

(3) Critical habitat does not include man-made structures (such as buildings; bridges; aqueducts; runways; roads; well pads; metering stations; other paved areas; unpaved

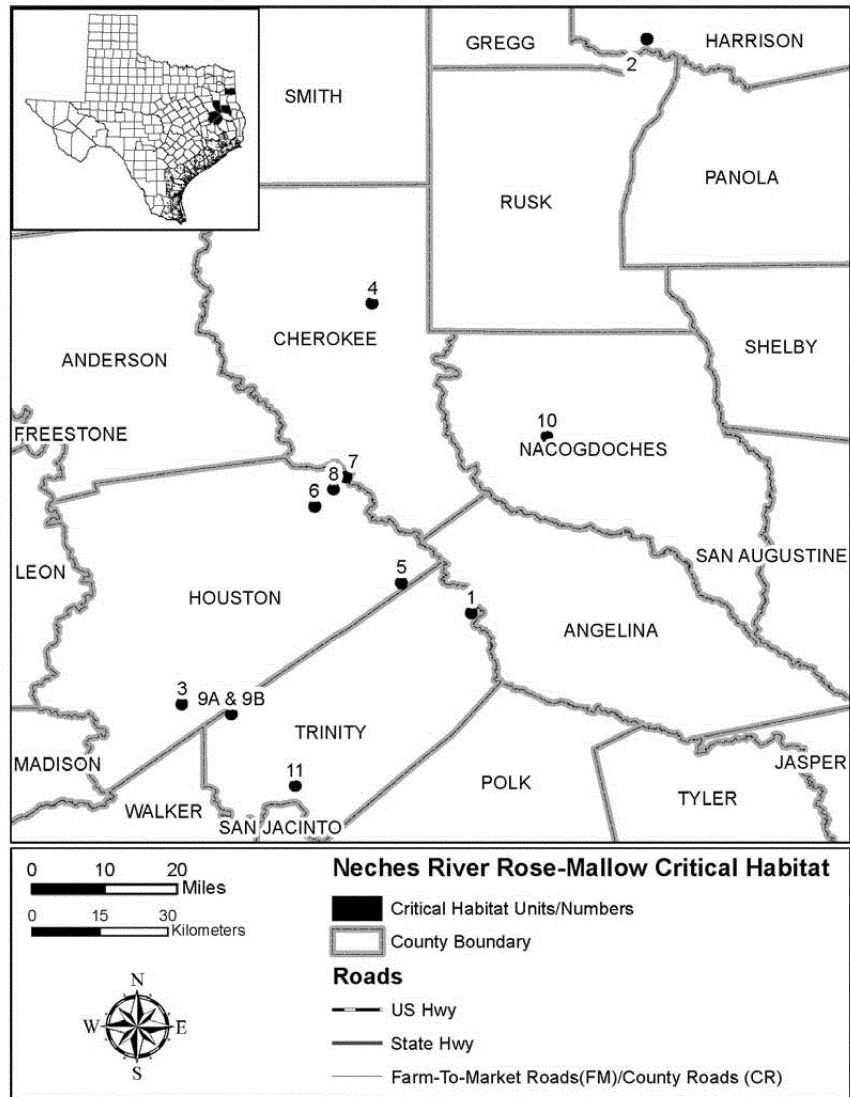
50 CFR Ch. I (10–1–13 Edition)

roads; and the filled areas immediately adjacent to pavement) and the land on which they are located existing within the legal boundaries on October 11, 2013.

(4) *Critical habitat map units.* Data layers defining map units were created on a base of Strategic Mapping Program (StratMap) digital orthophoto quarter-quadrangles (DOQQs), with layers for boundaries and roads. The Service's National Wetlands Inventory maps for the appropriate USGS quads were also downloaded as layers. Critical habitat units were mapped using Geographic Coordinate System (GCS), North American, 1983. The maps in this entry, as modified by any accompanying regulatory text, establish the boundaries of the critical habitat designation. The coordinates or plot points or both on which each map is based are available to the public at the Service's internet site, at http://www.fws.gov/southwest/ElectronicLibrary/ElectronicLibrary_Main.cfm, at <http://www.regulations.gov> at Docket No. FWS-R2-ES-2013-0027, and at the field office responsible for this designation. You may obtain field office location information by contacting one of the Service regional offices, the addresses of which are listed at 50 CFR 2.2.

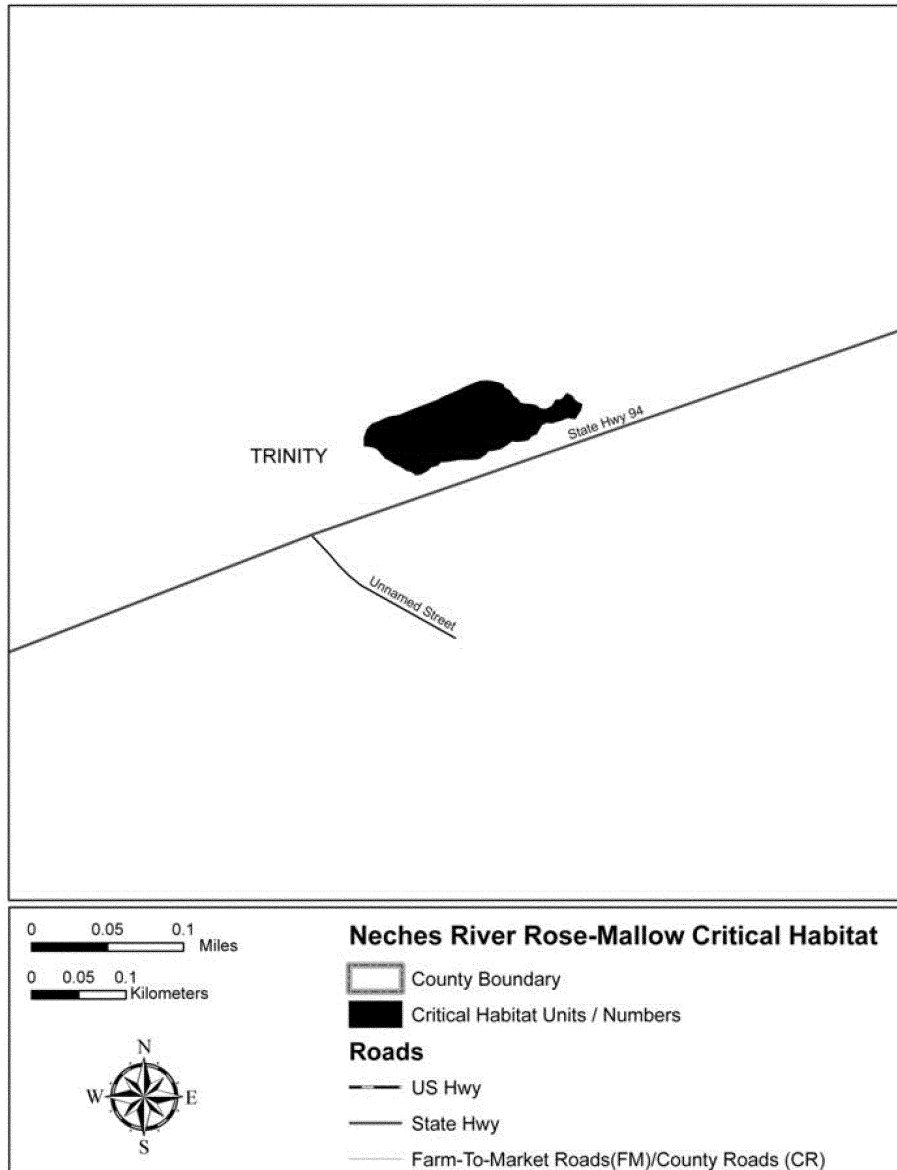
(5) Index map follows:

Index Map
Critical Habitat for *Hibiscus dasycalyx* (Neches River rose-mallow)



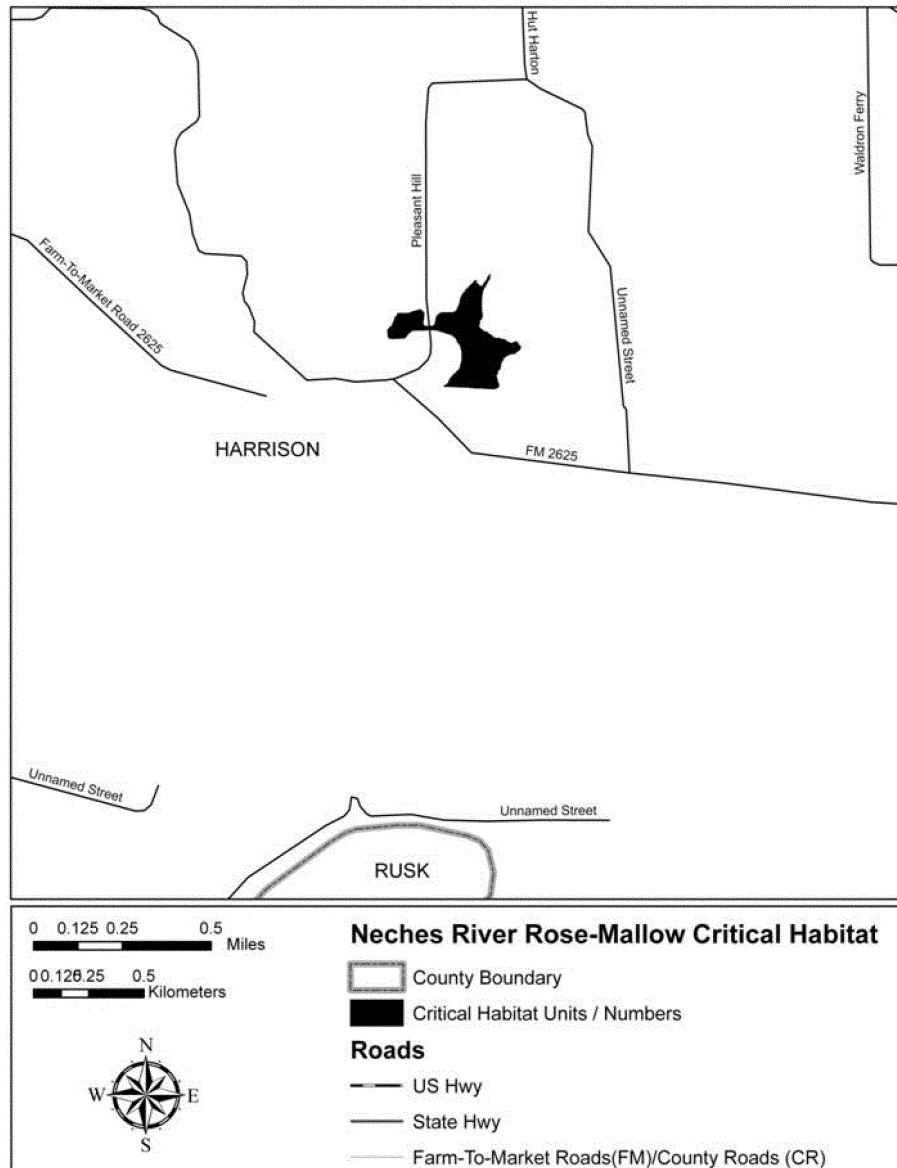
(6) Unit 1: State Highway 94 right-of-way, Trinity County, Texas. Map of Unit 1 follows:

Unit 1
Critical Habitat for *Hibiscus dasycalyx* (Neches River rose-mallow)



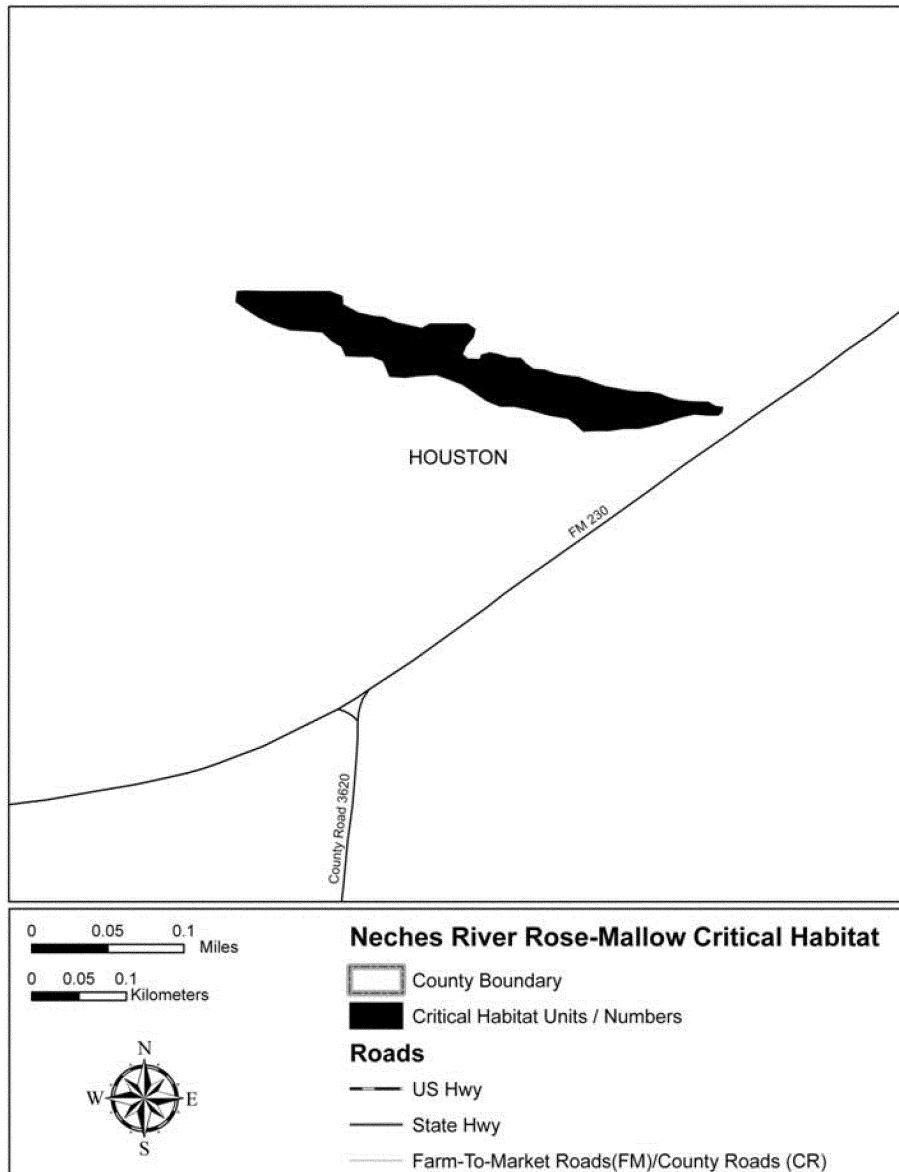
(7) Unit 2: Harrison site, Harrison County, Texas. Map of Unit 2 follows:

Unit 2
Critical Habitat for *Hibiscus dasycalyx* (Neches River rose-mallow)



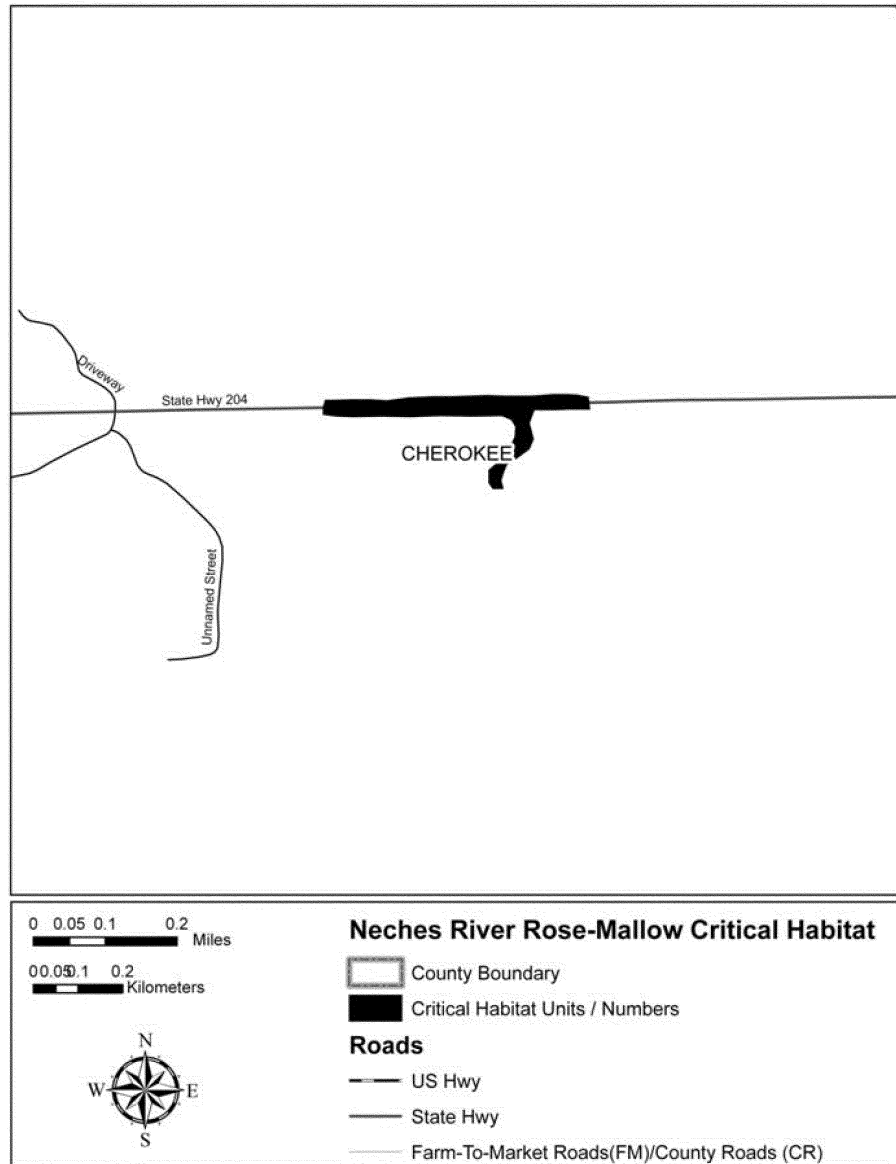
(8) Unit 3: Lovelady, Houston County, Texas. Map of Unit 3 follows:

Unit 3
Critical Habitat for *Hibiscus dasycalyx* (Neches River rose-mallow)



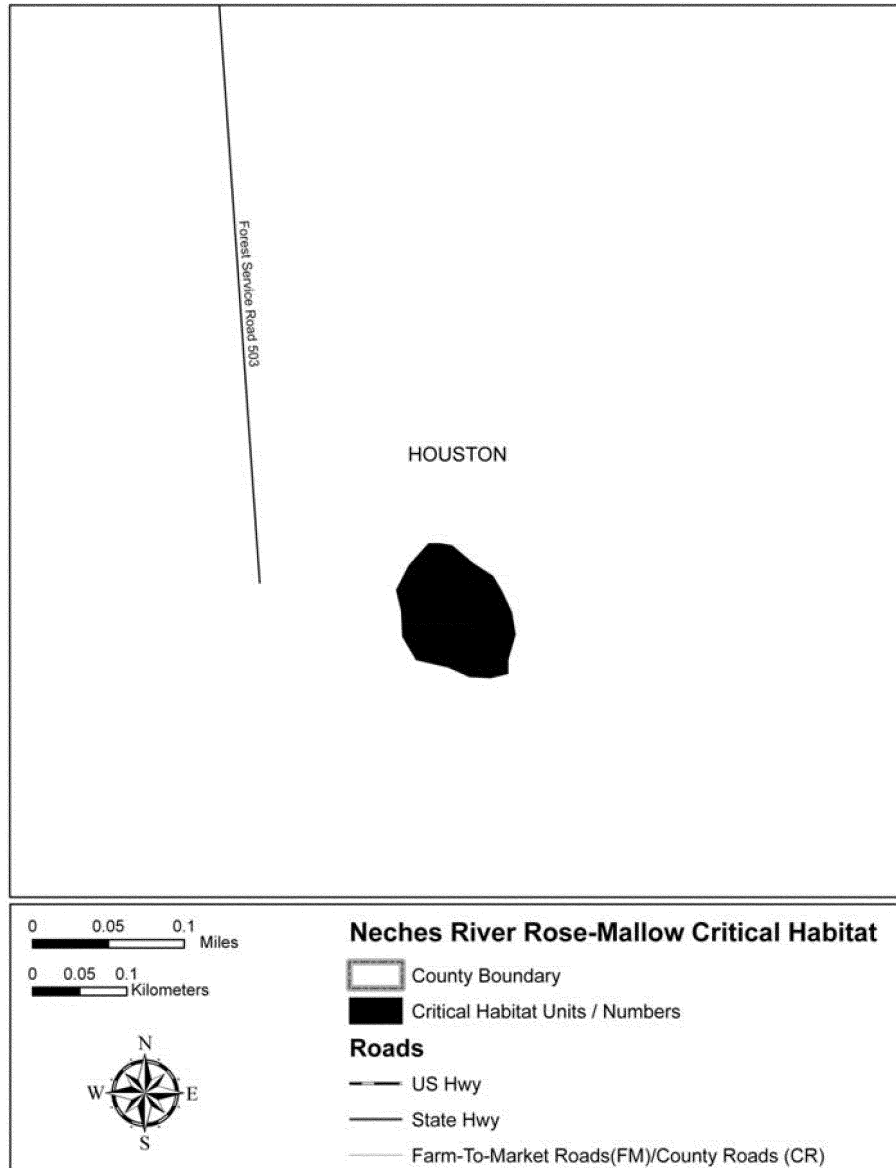
(9) Unit 4: State Highway 204 right-of-way,
Cherokee County, Texas. Map of

Unit 4
Critical Habitat for *Hibiscus dasycalyx* (Neches River rose-mallow)

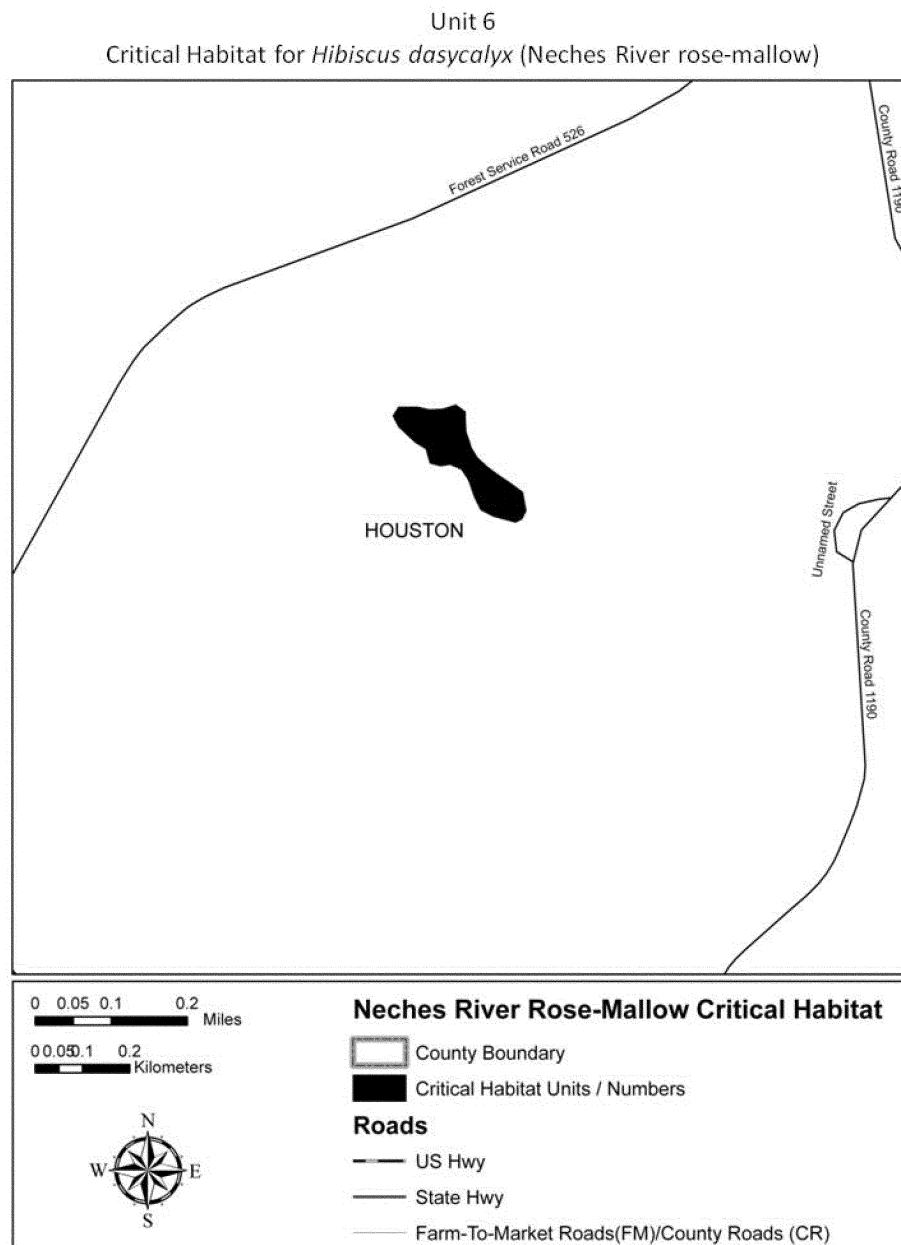


(10) Unit 5: Davy Crockett National Forest,
Compartment 55, Houston County,

Unit 5
Critical Habitat for *Hibiscus dasycalyx* (Neches River rose-mallow)

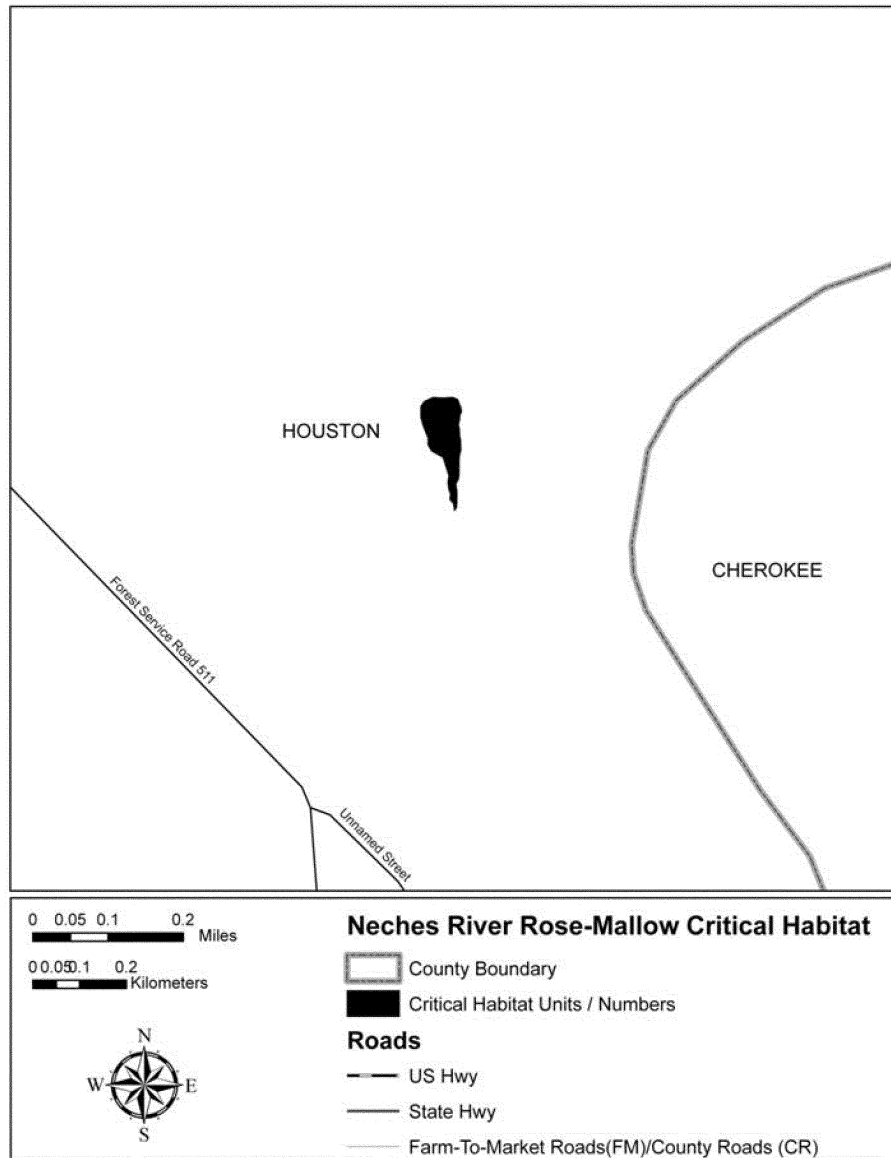


(11) Unit 6: Davy Crockett National Forest,
Compartment 11, Houston County,



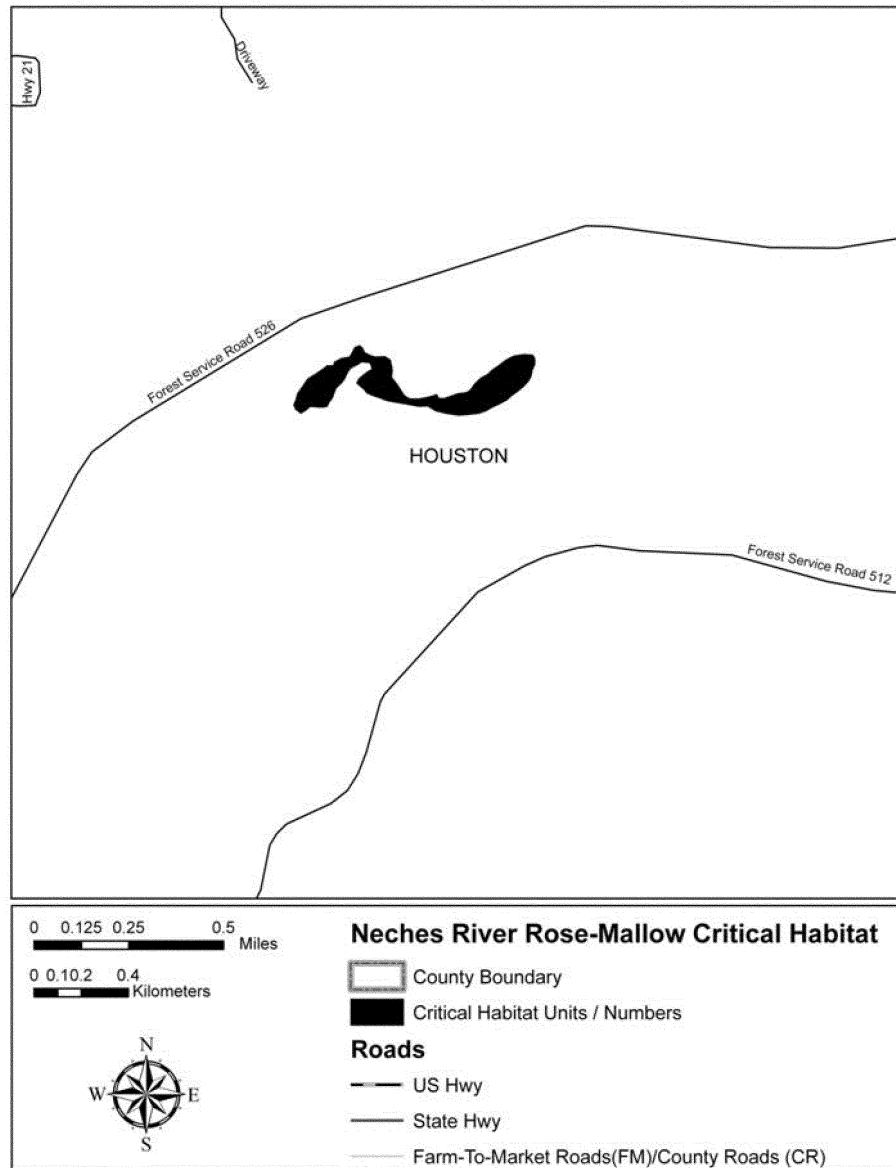
(12) Unit 7: Davy Crockett National Forest,
Compartment 20, Houston County,

Unit 7
Critical Habitat for *Hibiscus dasycalyx* (Neches River rose-mallow)

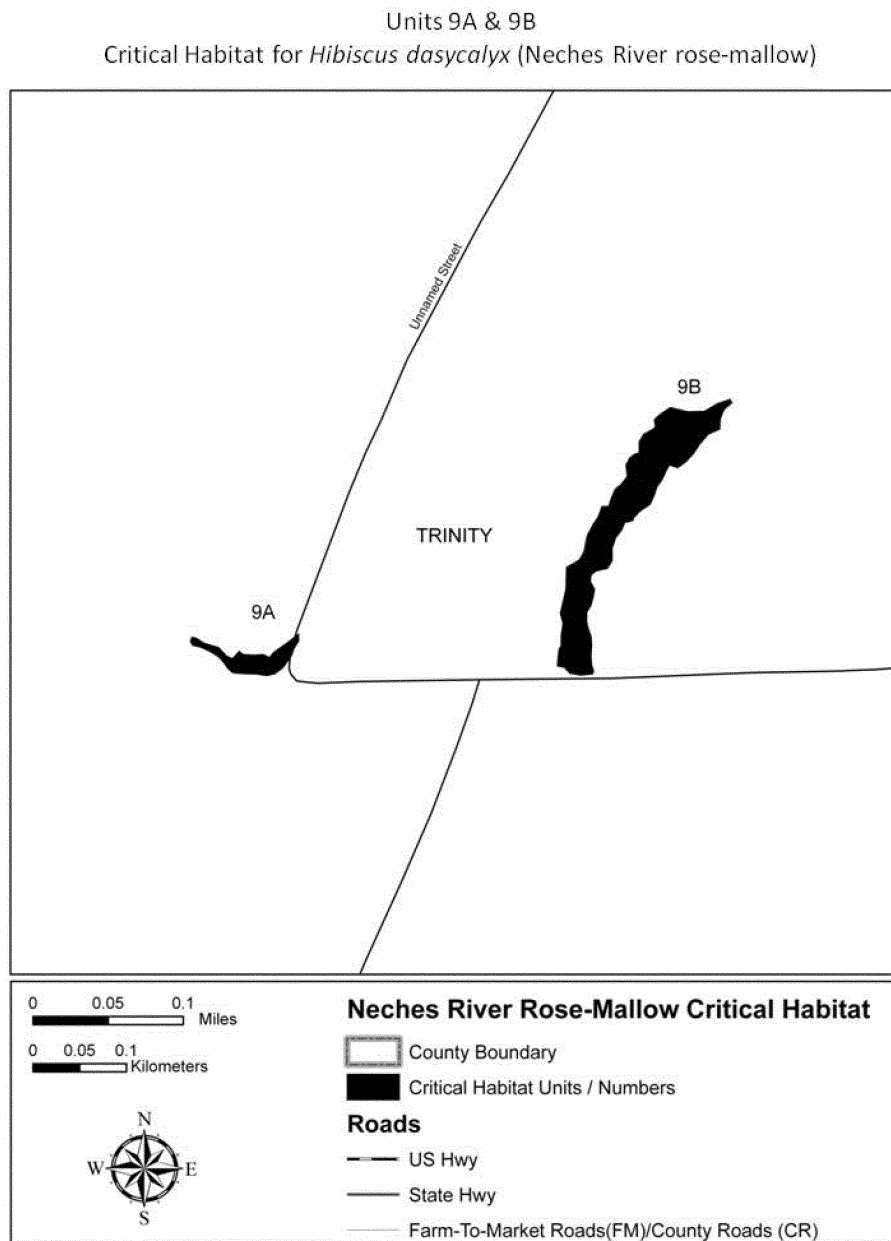


(13) Unit 8: Davy Crockett National Forest,
Compartment 16, Houston County,

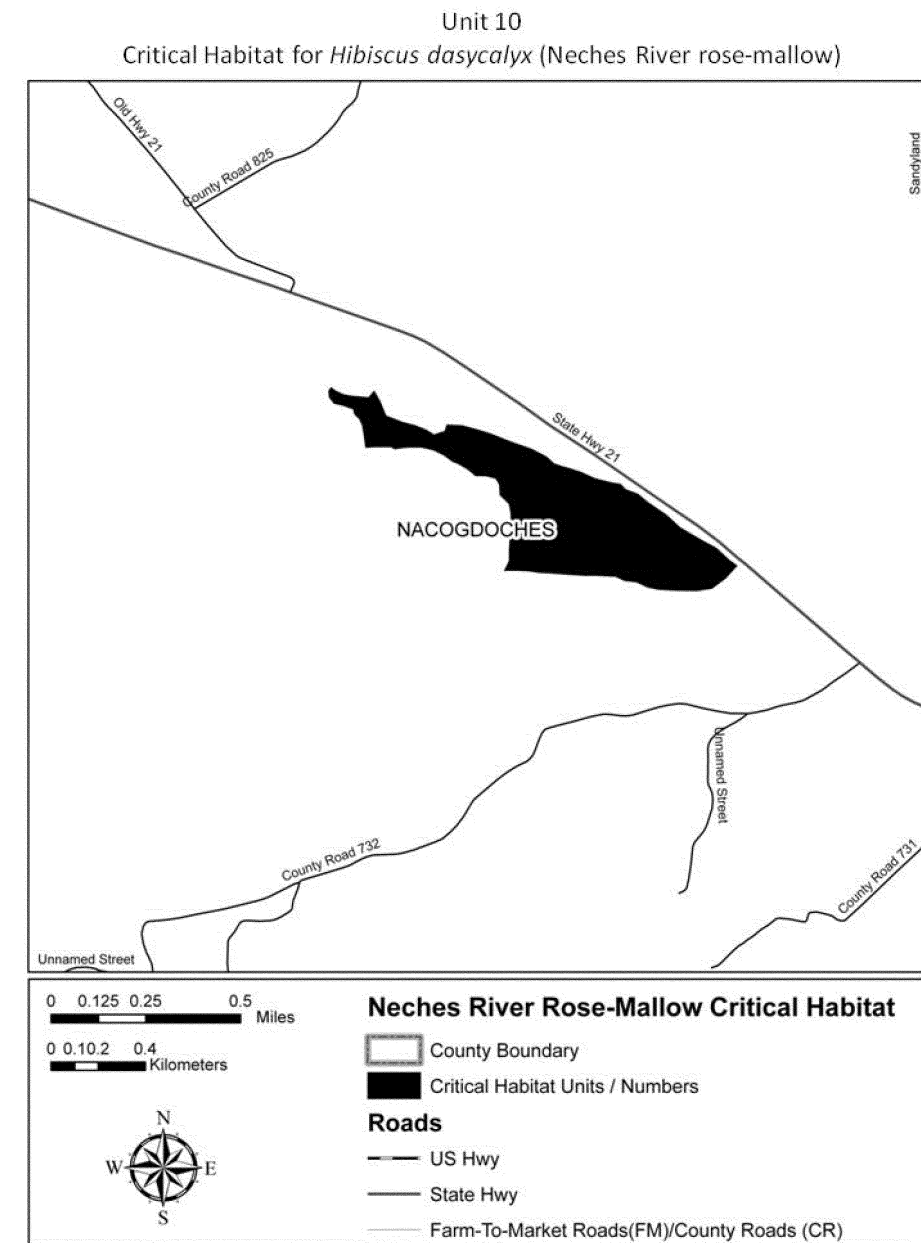
Unit 8
Critical Habitat for *Hibiscus dasycalyx* (Neches River rose-mallow)



(14) Unit 9: Champion site, Trinity County, Texas. Map of Unit 9 follows:



(15) Unit 10: Mill Creek Gardens,
Nacogdoches County, Texas. Map of Unit 10
follows:



(16) Unit 11: Camp Olympia, Trinity County, Texas. Map of Unit 11 follows:

Unit 11
Critical Habitat for *Hibiscus dasycalyx* (Neches River rose-mallow)

