

Figure 3. Trench Jacks (Screw Jacks)

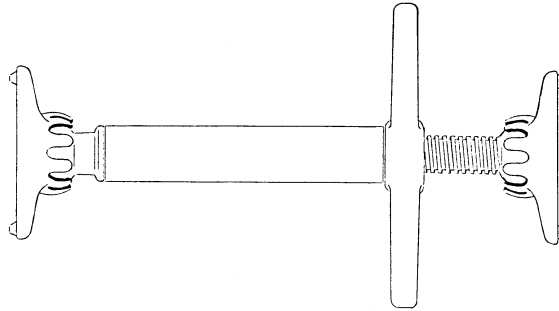
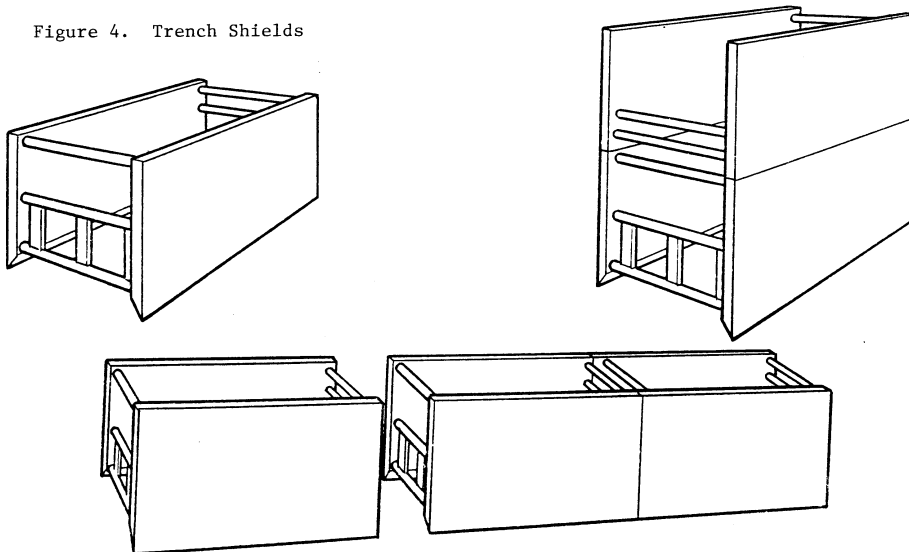


Figure 4. Trench Shields

APPENDIX F TO SUBPART P OF PART  
1926—SELECTION OF PROTECTIVE  
SYSTEMS

The following figures are a graphic summary of the requirements contained in sub-

part P for excavations 20 feet or less in depth. Protective systems for use in excavations more than 20 feet in depth must be designed by a registered professional engineer in accordance with § 1926.652 (b) and (c).

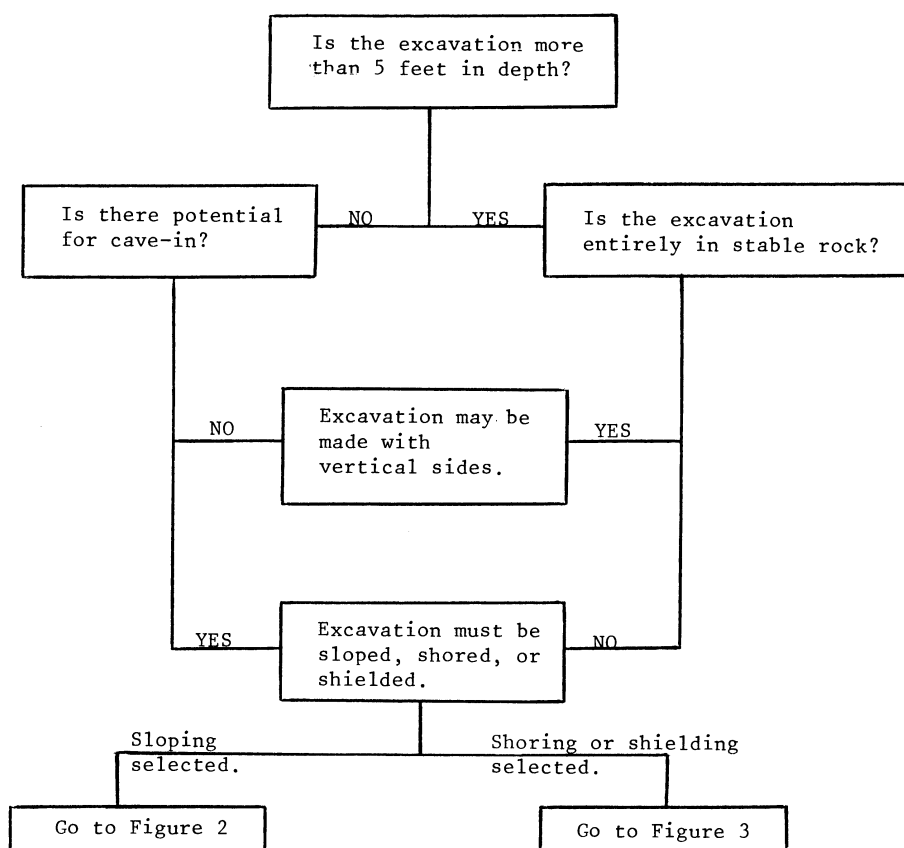


FIGURE 1 - PRELIMINARY DECISIONS

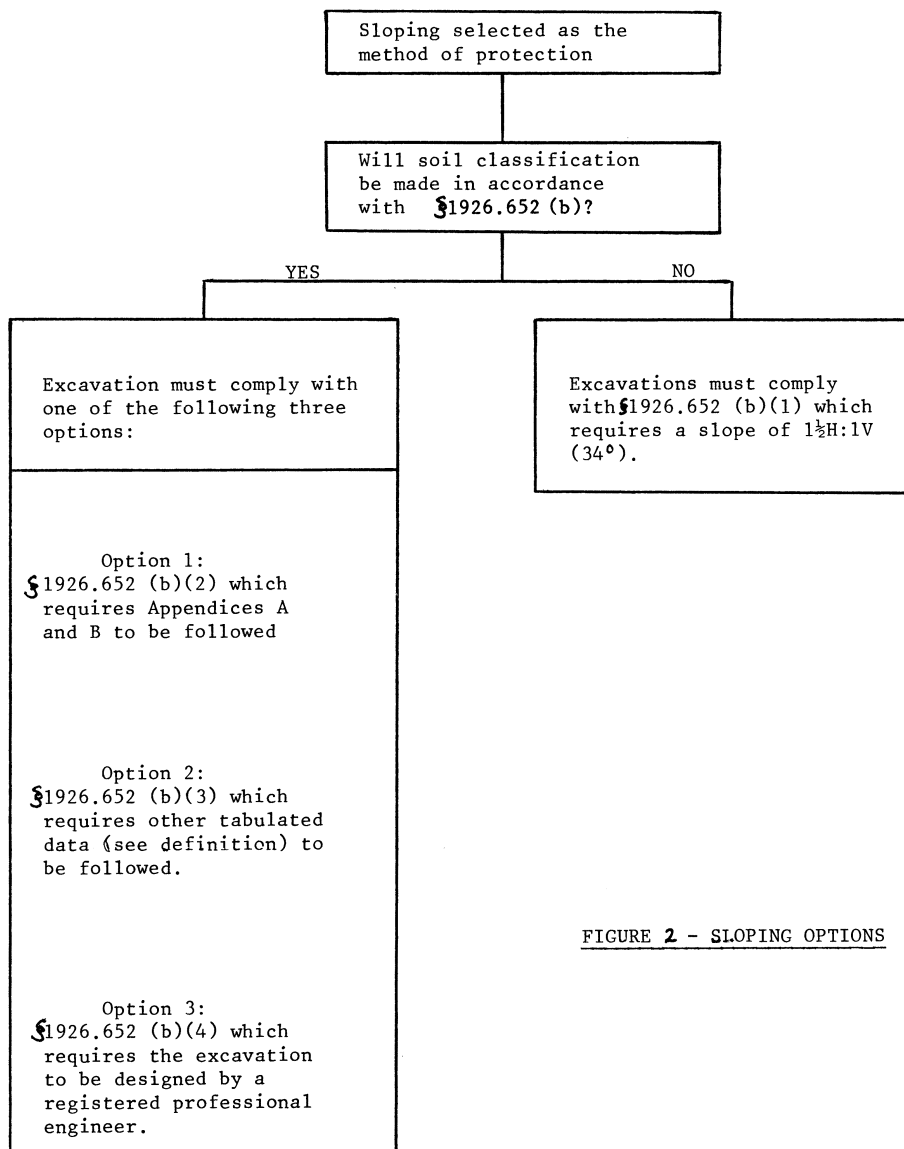


FIGURE 2 - SLOPING OPTIONS

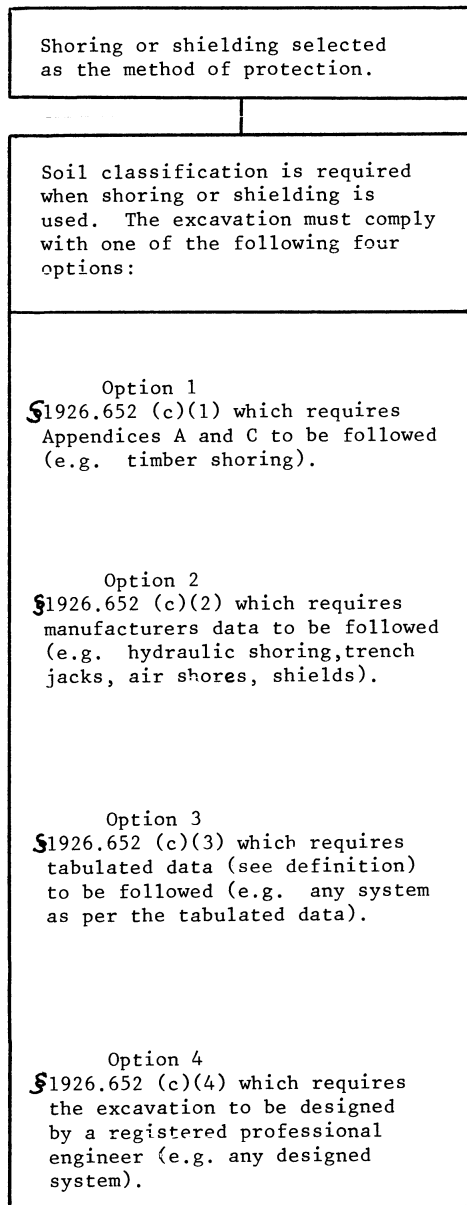


FIGURE 3 - SHORING AND SHIELDING OPTIONS